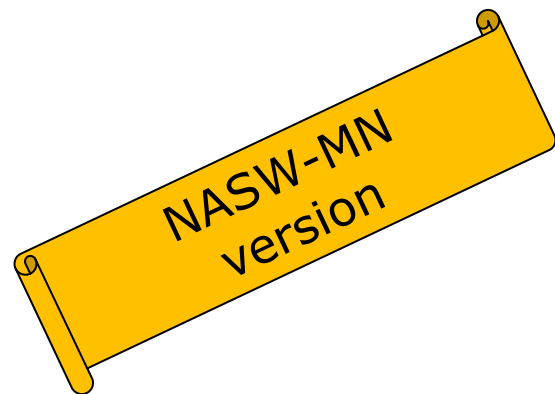


# Election 2012

---

## The Minnesota Caucus & Convention System



# **Social Workers Unite!**

---

- Be empowered –**
- Work at the grassroots –**
- Make a difference!**

## **Attend your Caucus!**

*Policies are made by the people we elect, which affects our everyday lives!*

---

# Caucus Meeting Times

---

You do not need to be a registered voter  
to participate in the caucus process.

**Tuesday, February 7, 2012, 7 PM**

**For more information on where to go contact your party:**

- Constitution Party- <http://www.cpmn.org>
- Democratic Farmer Labor- <http://www.dfl.org/>
- Green Party- [www.mngreens.org](http://www.mngreens.org)
- Independence- <http://www.mnip.org/> and
- Republican- <http://www.mngop.com>

**-OR-**

MN Secretary of State: <http://caucusfinder.sos.state.mn.us/>

---

# *Who is running?*

## Key Races in MN in 2012

---

- US President and Vice President
  - 1 US Senate seat (Klobuchar)
  - All 8 US House of Representative seats
  
  - All 66 MN state Senate seats (because of redistricting)
  - All 134 MN state House seats
  
  - Non-partisan local races
-

# What is a Caucus?

(besides being enthusiastic and fun)

---

- A caucus is a precinct (large neighborhood sized) meeting of party faithful.
    - You can expect:
      - Informal and very relaxed
      - General confusion about “whether I’m in the right precinct?” And “What do we do next?”
      - Meeting rules & agenda established by each political party
      - Candidate speeches or testimonials
      - Usually non-competitive delegate selection
-

# MN Precinct Caucuses Objectives:

---

- Elect precinct officers
- Recommend ideas (RESOLUTIONS) for party platforms
  - NASW-MN has suggestions on their web page
- Elect delegates and alternates for party conventions at:
  - County conventions
  - Senate district conventions

SOCIAL WORKERS MAKE  
GREAT DELEGATES!

---

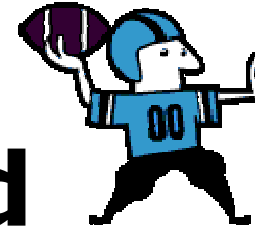
# Why should we care about primary and caucus turnout?

---

- Ballot choices are being decided by party activists- which might not be your choice!
    - Primary and caucus participation is going down generally as general election voting is going up.
    - Activist voters do not hold the same political views as those of the party in the general electorate
      - Activist Republicans—more conservative than Republicans in the general electorate
      - Activist Democrats—more liberal than Democrats in the general electorate
-

# How to Get Involved

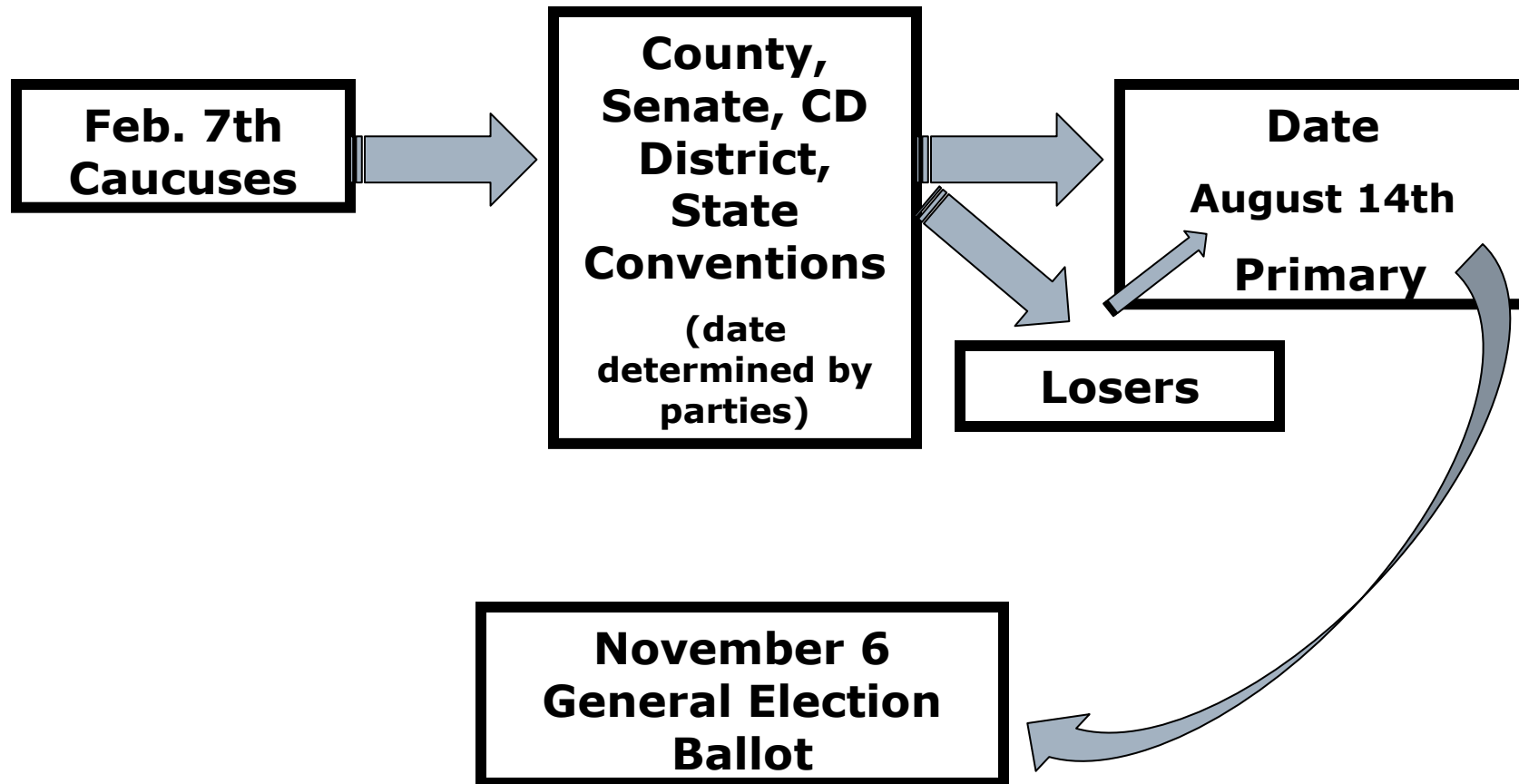
---



- Attend precinct caucuses
    - Contact your county party unit for locations.
    - Serve as a delegate
    - Present an NASW (or your own) Resolution
    - Get involved in local politics
  - Attend the conventions as a delegate
    - Endorse your favorite candidates
    - Support your favorite resolution
  - Vote in the Primary
  - Elect your favorite candidates in November
-

# Minnesota 2012 Election

---



# County Delegate Conventions

---

## Objectives

- Elect county officers
  - Recommend ideas (resolutions) for party platform
  - Elect delegates for endorsing candidates for statewide seats to:
    - Congressional District Party Convention
    - State Party Convention
-

# Caucuses, Conventions, Primaries are not just about Process—They're about People

---

- ❑ Abiding questions—“who best represents the party” and “who is most likely to win in the general election.”
  - ❑ Incumbents win > 90% of the time in legislative races
  - ❑ Executive office races and open seats are more competitive.
  - ❑ Delegates tend to focus their attention on competitive races and debate the strengths and weaknesses of their favorite candidates.
-

# PARTICIPATE!!

---

- This is where the decisions are made
- This is where you can speak out for the people you serve (and bring them along!)

Be the change you want to see!

*See you at the Caucuses!!!*

---